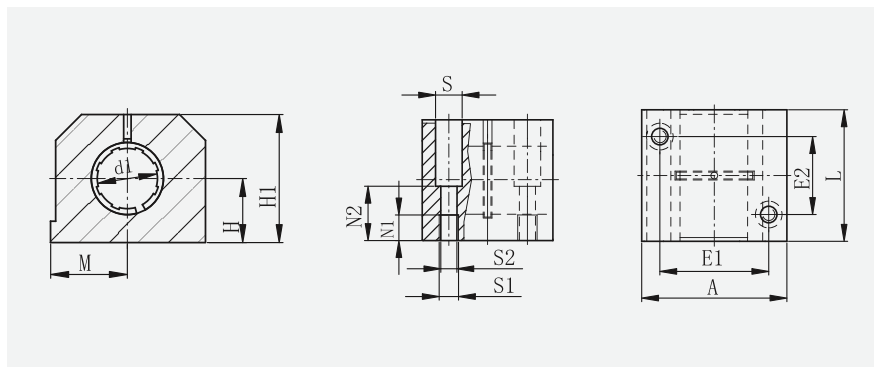


## LIN 系列直线轴承 LIN Series Linear Bearings

### LIN-06 加长型高精度直线轴承座 LIN-06 Long precision linear bearing



订购编码 Order P/N	轴 Axis mm <sup>2</sup>	公差 Tolerance mm <sup>2</sup>	F max. 动态 P=5 MPa	F max. 静态 P=35 MPa	重量 Weight g
LIN-06-12	12	+0.030 +0.088	960	6,720	121
LIN-06-16	16	+0.030 +0.088	1,440	10,080	211
LIN-06-20	20	+0.030 +0.091	2,250	15,750	323
LIN-06-25	25	+0.030 +0.091	3,625	25,375	651
LIN-06-30	30	+0.040 +0.110	5,100	35,700	1,050
LIN-06-40	40	+0.040 +0.115	8,000	56,000	1,820
LIN-06-50	50	+0.050 +0.130	12,500	87,500	3,250

### 装配尺寸 Installation size

订购编码 Order P/N	d1	H +0.01 -0.014	H1	A	M	E ± 0.15	E1 ± 0.15	S	S1	S2	N1	N2	L
LIN-06-12	12	18	35	43	25.1	32	23	8.0	M5	4.3	16.5	11	39
LIN-06-16	16	22	42	53	26.5	40	26	10.0	M6	5.3	21.0	13	43
LIN-06-20	20	25	50	60	30.0	45	32	11.0	M8	6.6	24.0	18	54
LIN-06-25	25	30	60	78	39.0	60	40	15.0	M10	8.4	29.0	22	67
LIN-06-30	30	35	70	87	43.5	68	45	15.0	M10	8.4	34.0	22	79
LIN-06-40	40	45	90	108	54.0	86	58	18.0	M12	10.5	44.0	26	91
LIN-06-50	50	50	105	132	66.0	108	50	20.0	M16	13.5	49.0	34	113

订购编码 Order P/N: LIN-06-12

内径 Inner diameter

标准开口系列 06  
Standard series 06